



PRODUCT CHANGE NOTIFICATION

Optimization of Module Dimensions

Module Series Affected: YLxxxP-29b, YLxxxP-35b, YLxxxD-30b, YLxxxD-36b, YLxxxC-30b, YLxxxC-36b, YLxxxPD-29b, YLxxxPD-35b, YLxxxDD-30b, YLxxxDD-36b.

August 1st, 2017 // PC17002

Introduction

Yingli Green Energy Holding Company Limited, known as “Yingli Solar”, is one of the world’s leading solar panel manufactures. Based on the new requirement of electric clearance and creepage distance according to IEC61730-1 and UL1703 standards, Yingli Solar is introducing changes to the Yingli Solar modules. These product changes apply to both IEC and UL certified product distributed globally.

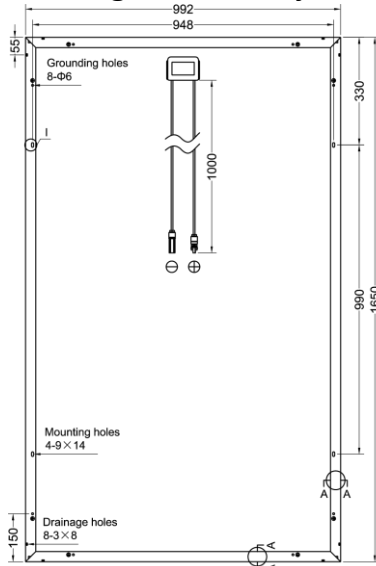
Descriptions

Yingli Solar is introducing modules with three optimized frames.

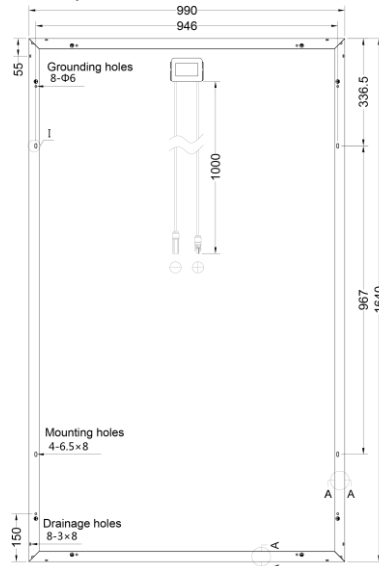
- I. Applied to YLxxxP-29b, YLxxxD-30b and YLxxxC-30b series products: According to the module dimensions optimized, the module dimensions will be changed from 1640mm*990mm to 1650mm*992mm, the distance between the two mounting holes in long frame and short frame will be changed from 967mm, 946mm to 990mm, 948mm, the mounting hole dimensions will be changed from 6.5mm*8mm to 9mm*14mm.
- II. Applied to YLxxxP-35b, YLxxxD-36b and YLxxxC-36b series products: According to the module dimensions optimized, the short frame will be changed from 990mm to 992mm, the distance between the two mounting holes in long frame and short frame will be changed from 1154mm, 946mm to 1300mm, 948mm, the mounting holes dimensions will be changed from 6.5mm*8mm to 9mm*14mm.
- III. Applied to YLxxxPD-29b, YLxxxPD-35b, YLxxxDD-30b, YLxxxDD-36b series products: According to the module dimensions optimized, the short frame will be changed from 990mm to 992mm, the distance between the two mounting holes in short frame will be changed from 946mm to 948mm, the mounting holes dimensions will be changed from 6.5mm*8mm to 9mm*14mm.
- IV. Applied to all affected module series mentioned above: According to the module appearance optimized, all the frames will be changed into smooth surface, product decoration lines will be removed. The optimized modules have more excellent mechanical performance, reliability of stability and also the characteristics of lightweight.



Due to the enlarged module size, the module efficiency will reduce a bit [Module Efficiency=Module Power/ (Module Area*1000)], but this product change does not involve the other electrical properties of the module. (Any encapsulation mode follows the change, below is just schematic diagram.)

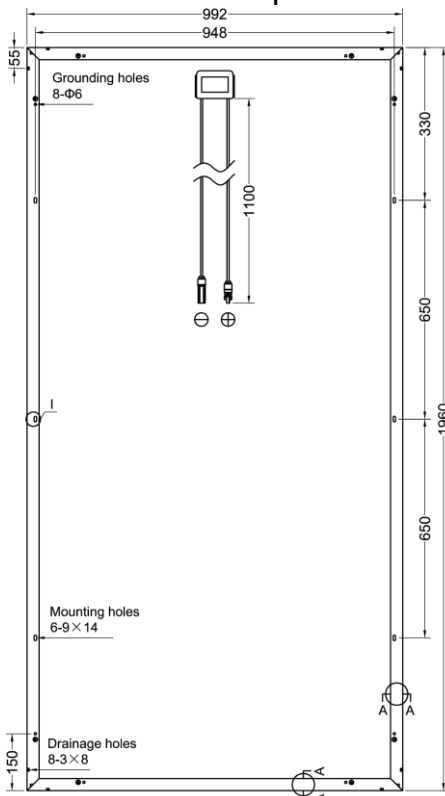


New Pattern

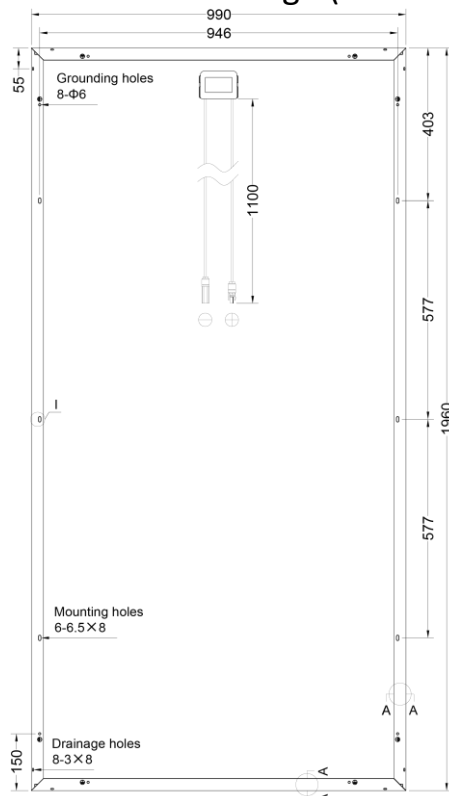


Current Pattern

Figure 1: Detailed comparison of new and current frame design (close-up of I)

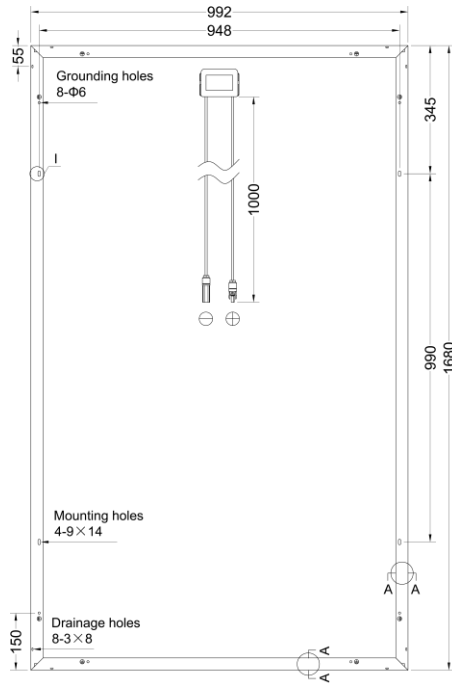


New Pattern

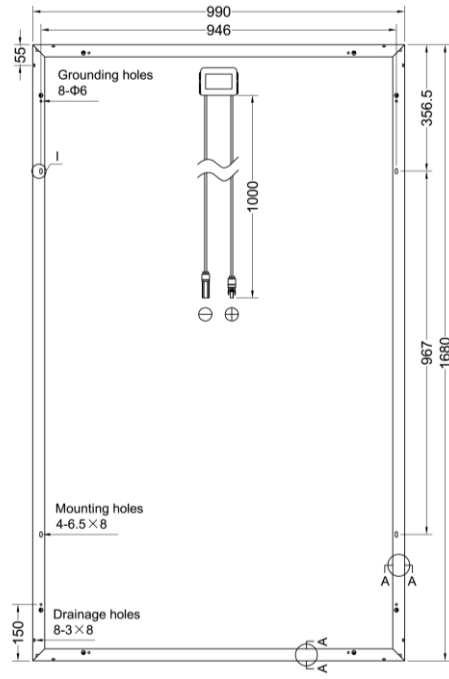


Current Pattern

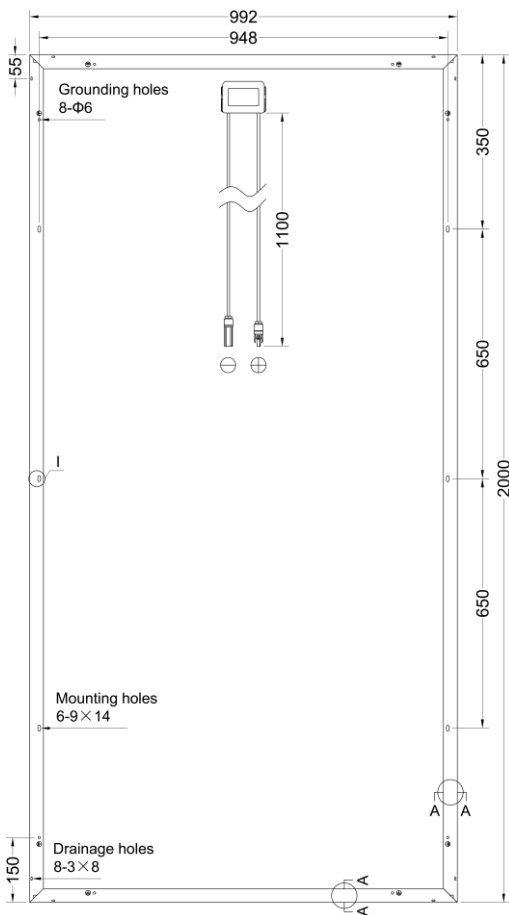
Figure 2: Detailed comparison of new and current frame design (close-up of II)



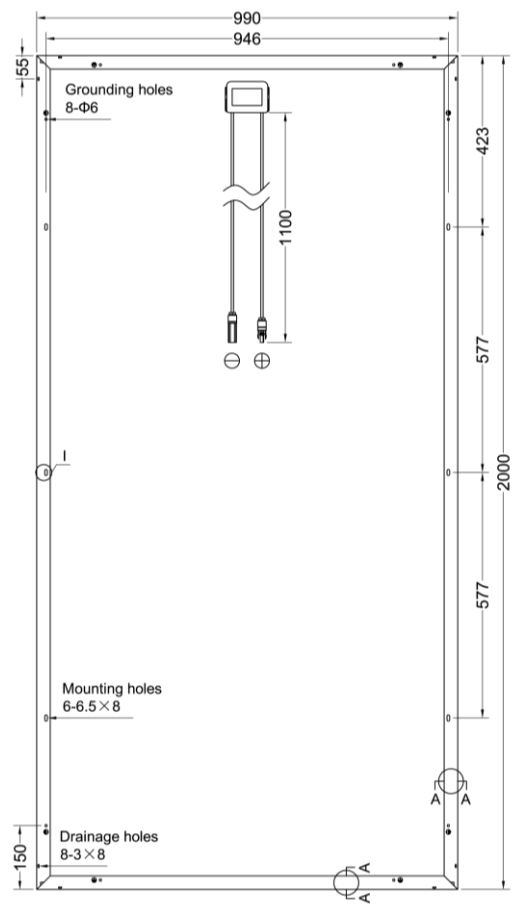
New Pattern



Current Pattern

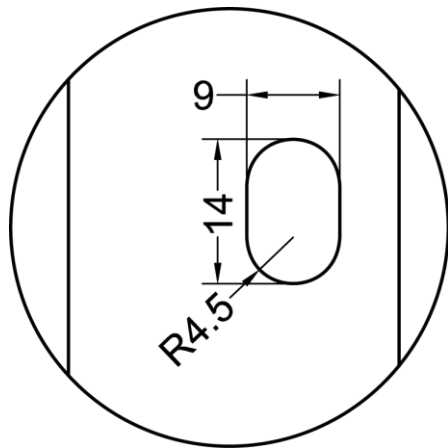


New Pattern

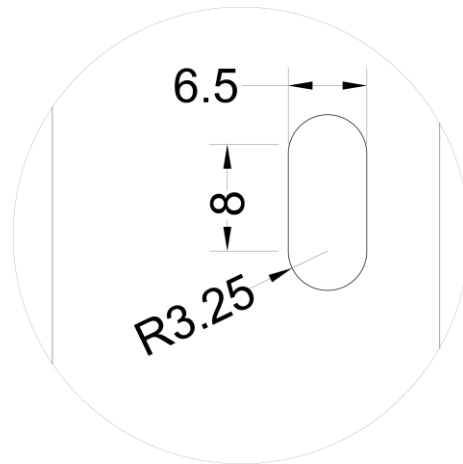


Current Pattern

Figure 3: Detailed comparison of new and current frame design (close-up of III)



New Mounting Hole



Current Mounting Hole

Figure 4: Detailed comparison of new and current mounting hole (close-up of I/II/III)



New Frame



Current frame

Figure 5 : Detailed comparison of new and current frame (close-up of IV)

Implementation

Yingli Solar has scheduled to implement the aforementioned changes in production at the beginning of August 2017, which means customers may receive shipments of new products as early as September 2017.

The specific transition timeline may vary among customers based on current and anticipated delivery schedules and will be communicated by your Yingli Solar sales account manager.

New datasheets and installation & user Manual will be downloaded from Yingli Solar Website www.yinglisolar.com in middle of August, 2017. For technical

questions relating to the new product features, please contact: service@yingli.com.
For all other inquiries, please contact your Yingli Solar sales account manager.